

| Cytology Cytochemistry | Immunophenotyping Immunochemical assay | Conventional cytogenetics: hematological karyotyping | Molecular cytogenetics: Fluorescent in situ Hybridization (FISH) | Molecular Biology |
|--|--|---|--|---|
| <p>Mature B-cell neoplasms</p> <p>Chronic lymphocytic leukemia / small lymphocytic lymphoma Monoclonal B-cell lymphocytosis</p> <hr/> <p>B-cell prolymphocytic leukemia Splenic marginal zone lymphoma Hairy cell leukemia Lymphoplasmacytic lymphoma Waldenstrom macroglobulinemia Extranodal marginal zone lymphoma of mucosa-associated lymphoid tissue (MALT lymphoma) Nodal marginal zone lymphoma Follicular lymphoma Mantle cell lymphoma Diffuse large B-cell lymphoma (DLBCL) Burkitt lymphoma Burkitt – like lymphoma with 11q aberration High-grade B-cell lymphoma, with MYC and BCL2 and/or BCL6 rearrangements</p> <hr/> <p>Monoclonal gammopathy of undetermined significance (MGUS) Plasma cell myeloma</p> | <p>B cell markers with: Matutes scoring + CD38 + CD200</p> <p>Immunophenotyping for hairy cell leukemia: CD19, CD11c, CD25, CD103.</p> | <p>Blood karyotyping and/or</p> <p>Lymph nodes karyotyping and /or</p> <p>Invaded bone marrow karyotyping</p> | <p>CLL panel (ATM - chromosome 12 - chromosome 13 - TP53)</p> <p>CLL panel (ATM - chromosome 12 - chromosome 13 - TP53)</p> <p>IgH-DC IgH-CCND1 IgH-BCL2 BCL6 CMYC MALT 7q</p> | <p>Mutation TP53</p> <p>B clonality</p> <p>BRAF (for hairy cell leukemia ONLY)</p> <p>MYD88 (for Lymphoplasmacytic lymphoma and Waldenstrom macroglobulinemia ONLY)</p> |
| | <p>Immunophenotyping Plasma Cells panel: CD38, CD138, CD19, CD56, CD200, CD27, CD45, K/L.</p> <p>Heavy/light chain isotype analysis</p> | | <p>Fish performed on selected plasma cells (CD138 magnetic beads) TP53/cap17 Chromosome 1 status, IgH/DC, IgH/CCND1, IgH-FGFR3, IgH-MAF</p> | |
| | <p>T-cell markers: CD2, CD3, CD5, CD7, CD4, CD8, TCRαβ, TCRγδ, CD16, CD56, CD57.</p> | | <p>TCRa/d TP53 ATM</p> | <p>T clonality TCR rearrangement</p> |

Peripheral blood and/or bone marrow aspirate smears analysis

Sample requirements

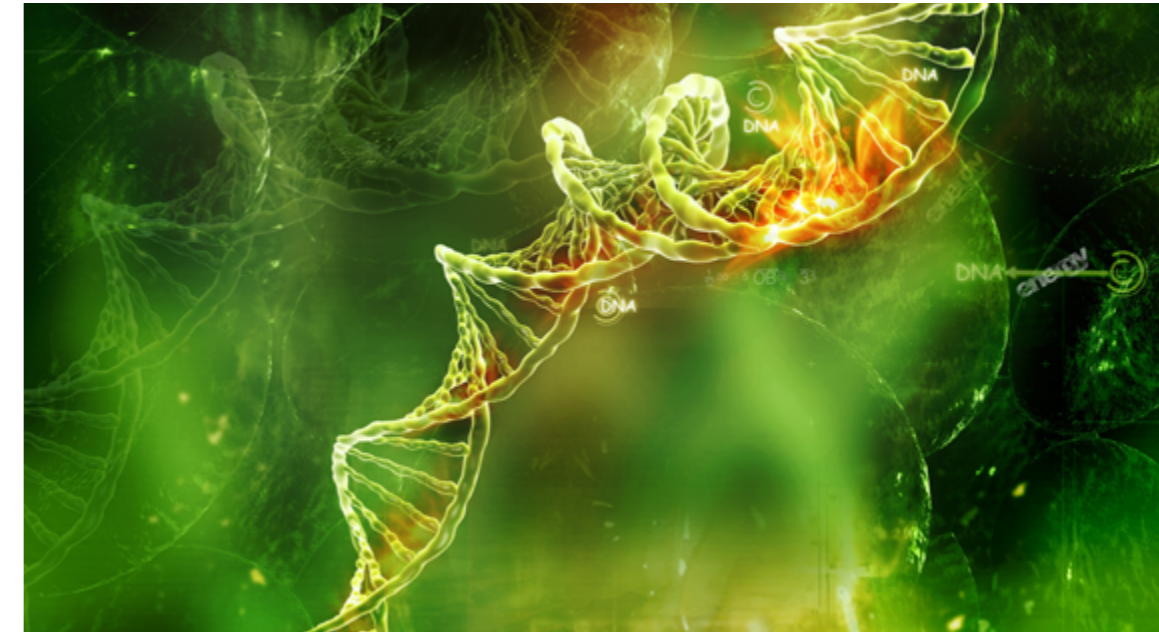
Sample must reach laboratory within 48 hours.

| | Preanalytical | | | | Temperature | Required informations | Test request form |
|---|---|--|----------------------------------|---|-----------------------------------|--|--|
| | Blood | Bone marrow | Lymph nodes | Other | | | |
| Cytology / Cytochemistry | 2 slides unfixed and unstained | ≥4 slides unfixed and unstained | | | Room temperature Do not freeze | - Clinical data - FBC | B8-INTGB Malignant blood disorders + BW12-INTGB Fish request form for Malignant Hemopathies and Solid Tumors |
| Immunophenotyping | 1 EDTA tube (or 1 heparin tube) 2 slides unfixed and unstained | 2 ml in EDTA (or heparin) 2 slides unfixed and unstained | | | Room temperature Do not freeze | - Clinical data - FBC | |
| Conventional cytogenetics : Haematological karyotyping | 5ml 1 lithium heparin tube | 2-5ml 1 heparin medullary puncture transferred to 1 lithium heparin tube | Vial with sterile culture medium | Biological fluid | Room temperature Do not freeze | | |
| Molecular cytogenetics : FISH | 5ml 1 lithium heparin tube | 2-5ml 1 heparin medullary puncture transferred to 1 lithium heparin tube | Vial with sterile culture medium | FISH also available on: unstained slides (peripheral blood or bone marrow smear) paraffin embedded lymph nodes No analysis from bone marrow biopsy | Room temperature Do not freeze | - Clinical data - FBC - Bone marrow report - Immunophenotyping report | |
| Molecular biology | Whole blood 2 EDTA tubes | Bone marrow transferred to 1 EDTA tube | | | Room temperature Do not freeze | | |

All the preanalytical information can be found on www.eurofins-biomnis.com > Test Guide



Biomnis



**Pathological diagnosis
and follow up of patients with**

Mature Lymphoid Neoplasms

References

*Swerdlow SH, Campo E, Harris NL, Jaffe ES, Pileri SA, Stein H, Thiele J
WHO Classification of Tumours of Haematopoietic and Lymphoid Tissues (Revised 4th edition)
IARC Lyon 2017



Eurofins Biomnis - International Division
17/19 avenue Tony Garnier
BP 7322 - 69357 LYON Cedex 07 - FRANCE
Tél. : +33 4 72 80 23 85
international@eurofins-biomnis.com
www.eurofins-biomnis.com