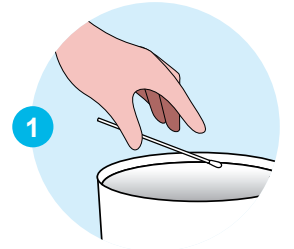


Sample Collection Protocol APTIMA® swab sample collection, endocervical and urethra canal
Chlamydia trachomatis and/or *Neisseria gonorrhoeae* and/or *Mycoplasma genitalium*

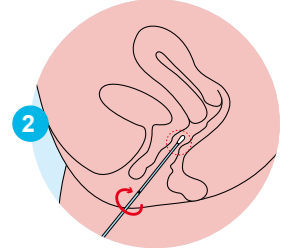
ENDOCERVICAL SWABS

- 1 Remove any excess mucous from the cervical orifice and surrounding mucosal membranes using the cleaning swab (**white tipped swab**). **Discard this swab.**
- 2 Introduce **the sample collection swab (BLUE tipped swab)** into the endocervical canal.
- 3 Gently turn the swab in a clockwise direction for 10 seconds in the endocervical canal to ensure adequate sampling.
- 4 Carefully remove the swab avoiding all contact with the vaginal mucosal membrane.
- 5 Remove the lid of the sample transport and place **ONLY the BLUE tipped** collection swab inside.
- 6 Carefully cut the swab tip at the cutting line being careful not to project the contents of the tube in doing so.
- 7 Tightly close the swab sample transport tube (airtight).

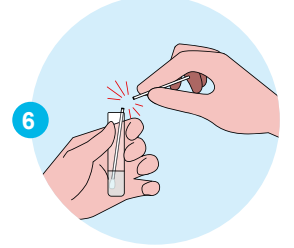


1

**WHITE SWAB:
DISCARD AFTER CLEANING**



2



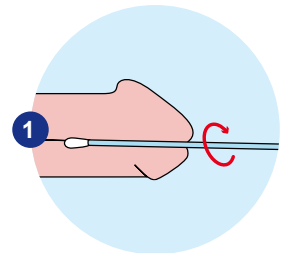
6

**BLUE SWAB:
USE TO COLLECT SAMPLE**

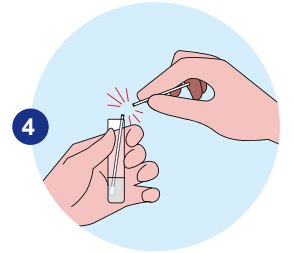
MALE URETHRA SWAB SAMPLES

! The patient must not have urinated for at least 1 hour before sample collection.

- 1 Introduce **the sample collection swab (BLUE tipped swab)** into the urethra to a depth of 2-4 cm.
- 2 Gently turn the swab in a clockwise direction for 2-3 seconds in the urethra to ensure adequate sampling..
- 3 Remove the lid of the sample transport tube and immediately place the collection swab inside.
- 4 Carefully cut the swab tip at the cutting line being careful not to project the contents of the tube in doing so.
- 5 Tightly close the swab sample transport tube (airtight).



1



4

TRANSPORT AND STORAGE OF SAMPLES

After sample collection, please store the swab in the APTIMA® K11UK transport medium at ambient temperature.