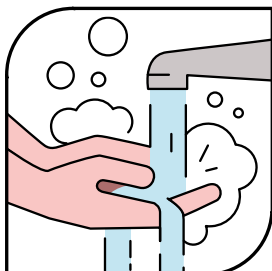


Protocol

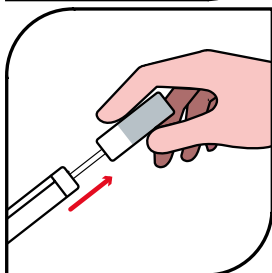
Vaginal self-sampling protocol for human papillomavirus detection



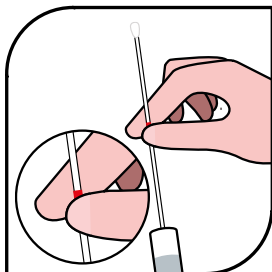
- 1 Open the swab cover only when in use, taking care not to touch anything with the tip of the swab



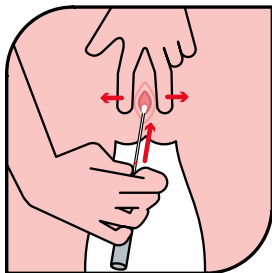
- 2 Wash your hands thoroughly



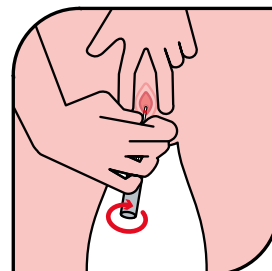
- 3 Remove the swab cap



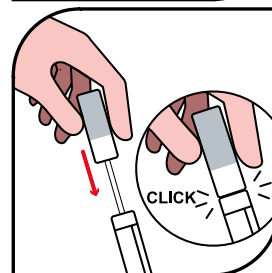
- 4 Take the swab shaft in your hand at the **red mark**



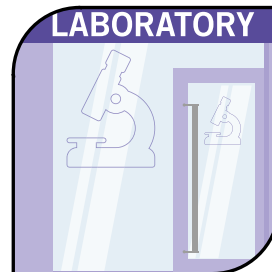
- 5 Choose a comfortable position and insert the swab into your vagina by its tip **until it reaches the red mark (held by your fingers)**



- 6 Rotate the swab in the same direction **for 10 to 30 seconds**



- 7 Remove the swab and place it in the tube.
When closing the tube, you should hear a **"click"**.



- 8 Return this sample to the **medical laboratory** that gave you this kit.

The sample taken can be stored in the tube at **room temperature**.

If you take the sample at home, please return your sample to the laboratory **as soon as possible**.

Make sure that the tube **does not open** during transport.

Watch this protocol on video

