

With the expertise that our company has gained over a century, the laboratory Biomnis endeavours to develop more innovative specialised tests with greater performance and benefits for both patients and the medical profession.

Our pathologists work day after day to improve screening methods, diagnostic services and therapeutic monitoring of patients with a specific emphasis on women's health.

New tests

■ HE4: a marker for ovarian cancer

The HE4 protein is a non-specific ovarian protein, however, this protein is over-expressed in ovarian epithelial cancers, even in the early stages of the disease. It is expressed independently of CA125. When combined, these two markers offer a better sensitivity and specificity for the detection of these cancers and cancer recurrence.

The ROMA (Risk of Ovarian Malignancy Algorithm) integrates HE4 and CA125 results as well as the menopausal status of patient to identify the risk of malignancy in the presence of a pelvic mass.

HE4 and ROMA improve patient care for those suffering from ovarian cancer. This cancer has a low incidence rate but a very high mortality rate.

■ Pre-eclampsia

Pre-eclampsia (PE) is one of the most frequently encountered complications that can occur during pregnancy. It is a major cause of maternal mortality in the world and is responsible for intra-uterine growth retardation and one-third of premature births.

PIGF (Placental Growth Factor) and PAPP-A are biochemical markers of pre-eclampsia. The assays are carried out during the 1st trimester of pregnancy and allow a risk of early-onset (before 34 weeks of amenorrhoea) and late-onset pre-eclampsia to be calculated. Testing can be combined with maternal serum marker testing for Down's syndrome. This risk calculation integrates information supplied about the patient (including the BMI, smoker, ethnic origin etc.), the gestational age, medical background (parity, prior cases of pre-eclampsia, arterial hypertension) and the blood pressure and details obtained from a Doppler scan of the uterine arteries.

This new screening tool helps to improve pre-eclampsia prevention and allows women with a raised risk to receive care early on.

Perspectives

■ Down's syndrome screening of circulating foetal DNA in maternal blood

The analysis of foetal DNA in maternal blood has been used for several years to monitor pregnancies so as to determine rhesus D maternal and foetal incompatibilities or for the determination of foetal gender in cases of genetic diseases linked to chromosome X.

High-output next-generation sequencing (NGS), which is performed by Biomnis, can now screen for the main aneuploidies, notably for Down's syndrome but also for T13, T18 and further developments are expected within 2014 to cover most of microdeletion and microduplication syndromes.

Contact details

■ International Division

Please contact the International Division for further details.

Telephone: +33 (0)4 72 80 57 42

Fax: +33 (0)4 72 80 73 56

Email: international@biomnis.com

Biomnis

19 av. Tony Garnier ■ 69007 LYON ■ FRANCE

www.biomnis.com

Focus on...



Specialised pathology for Women

SEPTEMBER 2013

A range of specialised tests dedicated to women*

* This list is non-exhaustive



Pregnancy follow-ups, screening and prenatal diagnostics

BIOMNIS CODE

Toxoplasmosis: serology - avidity	TOXO, TOXAV
Rubella: serology - avidity	RUBEO, RUBEM, RUBAV
Cytomegalovirus: serology - avidity	CMV, CMVAV
Varicella: IgG/IgM serology	VARZO
Parvovirus B19: IgG/IgM serology	PARV
HBs antigen: qualitative - neutralisation if positive	HBSAG
Irregular agglutinins: screening, identification, titration	RAI
PIGF + PAPP-A - Pre-eclampsia screening	PECLA ^{NEW}

NON-INVASIVE PRENATAL SCREENING

Down's syndrome screening	Δ
Down's Syndrome on circulating foetal DNA	COMING SOON
RhD genotyping on circulating foetal DNA	GRHDF

INVASIVE PRENATAL SCREENING

Screening for congenital diseases using karyotypes, SNP-array, FISH and QF-PCR	Δ
Genetic diagnosis of rare diseases	Δ
AFP and acetylcholinesterase assay	AFPLA, ACOLA



Medically Assisted Procreation (MAP)

BIOMNIS CODE

OVARIAN RESERVE EVALUATION

AMH	AMH
Estradiol	E2F
FSH	FSH
Inhibin B - serum	INHIB

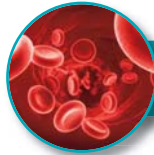
PREMATURE OVARIAN FAILURE

FMRA gene mutation (fragile X)	XFRA
Karyotype	CSG

CODE BIOMNIS (or group code)

This is the test code used to accurately identify the parameter. It is strongly advised to use these codes on your request forms, for searches in our on-line test guide and when in communication with Biomnis.

Δ : Several codes exist. They are dependent on the indication and sample type. Please check the test guide.



Thrombosis profile

BIOMNIS CODE

ESTROPROGESTOGENIC CONTRACEPTION (for cases with a personal or family medical history)

Antithrombin: activity	AT3C
Protein C: activity	PC
Protein S: activity	PS
Factor II G20210A gene mutation	F2M
Factor V gene mutation (V Leiden)	F5L
MTHFR gene mutation (test not recommended for first line testing)	MTHFR
Lupus anticoagulant (◊)	ACC
Anti-beta 2 glycoprotein 1 IgG and IgM antibodies (◊)	B2GPI, B2GPM
Anti-cardiolipin IgG and IgM antibodies (◊)	CARD, CARDM

(◊) These tests are also carried out in the miscarriage screens.



Oncology

BIOMNIS CODE

SCREENING FOR CERVICAL TUMOURS

Cervical and vaginal smear	MFR
Papillomavirus	HPV
SCC antigen - TA4 - serum	SCC

SCREENING FOR BREAST TUMOURS

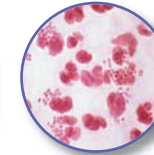
Hormonal receptors	PATHO
CerbB2 over-expression	ERBB2
HER2 amplification	MOHCY5
CA15-3 - serum	CA153

SCREENING FOR OVARIAN TUMOURS

CA125 - SERUM	CA125
HE4, ROMA calculation	HE4 ^{NEW}

SCREENING FOR GESTATIONAL TROPHOBLASTIC TUMOURS

hCG and free beta chain	BHCG, HCGT, HCG
-------------------------	-----------------



Sexually transmitted diseases

BIOMNIS CODE

<i>Chlamydia trachomatis</i>	Δ
<i>Neisseria Gonorrhoeae</i>	NGOBM
<i>Trichomonas vaginalis</i>	CBPV
<i>Gardnerella vaginalis</i>	CBPV
Genital mycoplasmas	MYCGE
Herpes virus	Δ



Menopausal, hormonal and phosphate/calcium profile

BIOMNIS CODE

Gonadotropins: LH, FSH, female estradiol, progesterone	Δ
Prolactin	PROL, TMP494
Testosterone (RIA)	TEF, TBEF
Delta-4 androstenedione (RIA)	D4
17-hydroxyprogesterone (RIA)	17OHP
DHA sulphate	SDHA
Sex Hormone Binding Globulin	TEBG
Estrone (RIA)	E1CH
Vitamin 25-D	25D
Intact parathormone	PTH
Osteocalcin	OSTEO
Bone alkaline phosphatases	PALO
CTX: cross laps	CROSS, CROSU
NTX: cross-linked N-telopeptide of type I collagen	NTX
P1NP: amino-terminal propeptide of type I collagen	P1NP

Find all the information you need for these tests in our on-line test guide.

A search by test name or Biomnis test code will help you find important information such as: the clinical interest of the test, method used, turn-around-time, price and details of the head pathologist.

Visit www.biomnis.com > Test Menu > Test guide or use the Biomnis mobile application.